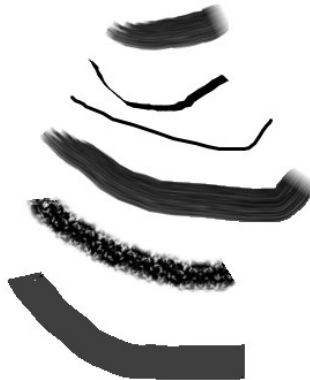
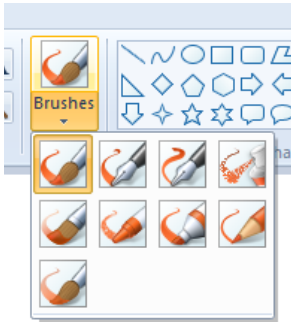


Prior Learning:

Facts

1. Painting using different brushes

- In paint programs there are a selection of different brushes to choose from.
- Each brush stroke looks different.

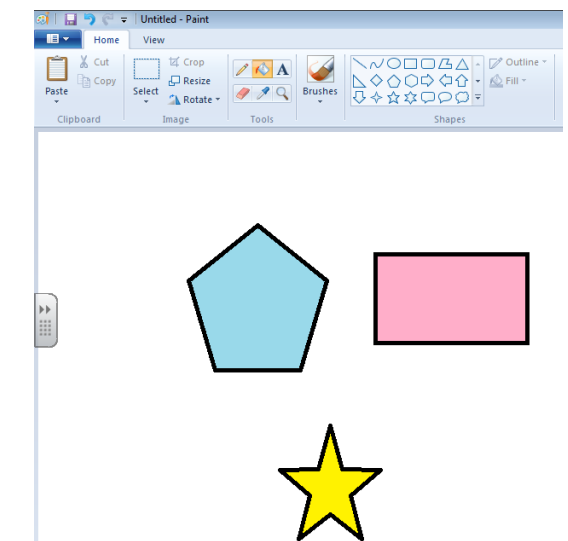
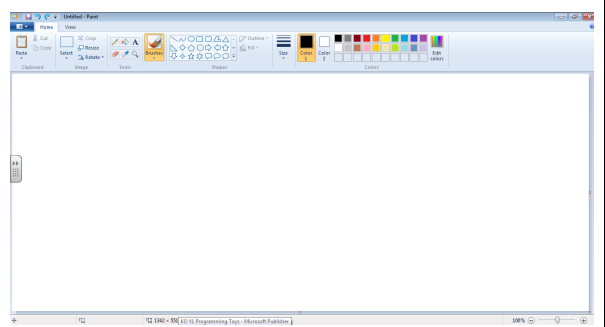
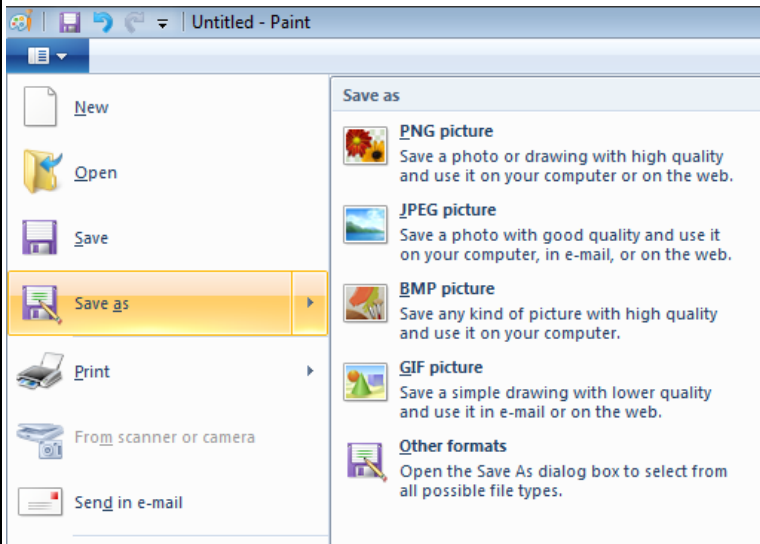


Vocabulary

1. Save—a command that causes a copy of the document or file to be created.
2. Undo—undo the last action you performed in the program.
3. Redo—redo the last action you performed in the program.
4. Format—editing or changing things—text and images.

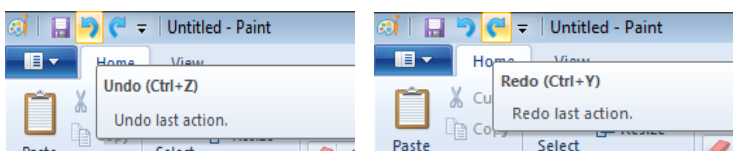
2. How to save work in a paint program

Once you have created your work you need to be able to save it so you can back to it.



3. Undo and redo

Sometimes you may make a mistake on your painting and want to undo it or redo it, you can do this by simply pressing a button.



Creating shapes and using the fill tool to fill them with colour.